

HUB CITY
IRON WORKS

JAR CLAMP (47, 62, 66, 81 & 95 SERIES)

OPERATOR'S MANUAL & PARTS BOOK



Hub City Iron Works
700 E Texas Ave.
Rayne, LA 70578
Phone: (337) 334-6969
Fax: (337) 365-6565
www.hubcityironworks.com

Customer: _____
Location: _____
Job #: _____
Local Rep: _____
Rep Phone # _____
Document # _____

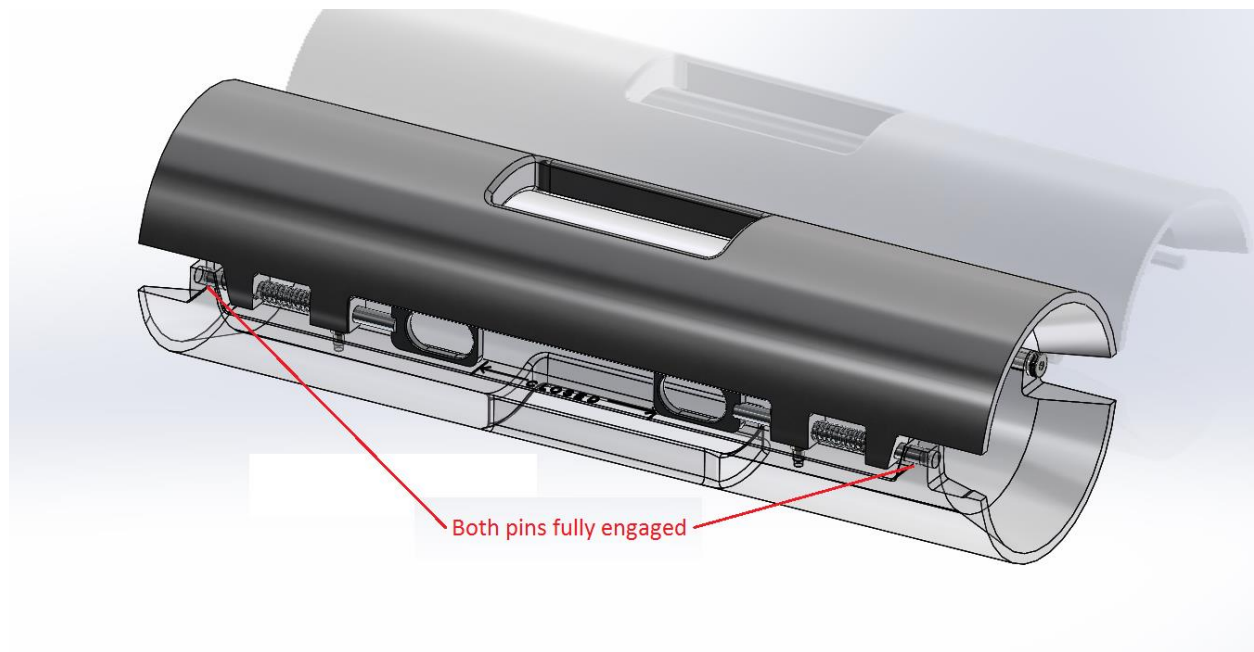
General Information

Hub City Iron Works' Jar Clamp is designed to function as a safety device for the Megaton series of drilling jars when on the rig floor. It functions by enveloping the jar when fully extended and prevents it from firing accidentally.

Operation

Squeeze the two pins together to allow the clamp to open. Place around jar and close the clamp. Ensure both pins are fully engaged into the receiver portion of the clamp. Only use the appropriate series of jar clamp on a particular jar.

NOTE: Do not force the clamp shut if the hinges become locked. This can permanently damage the clamp.

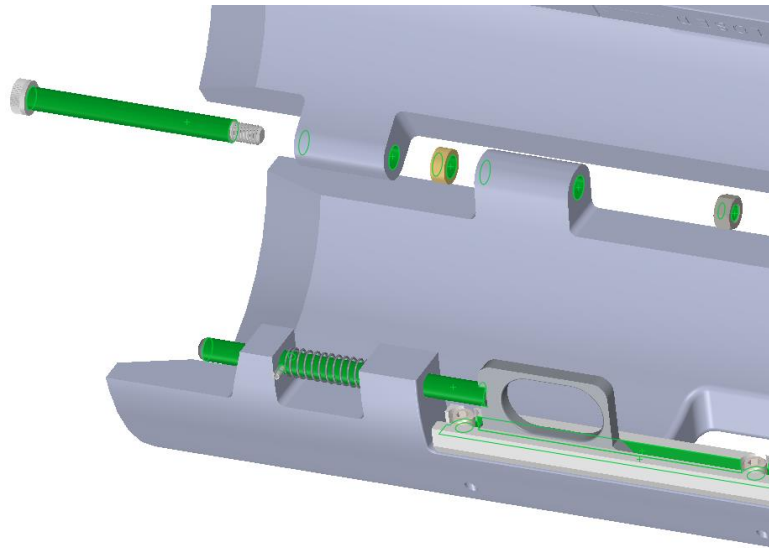


Maintenance

Upon return from jobs, the clamp should be cleaned inspected for damage. All defective parts should be replaced (See parts list for ordering information). After cleaning, all components should be lubricated as stated below.

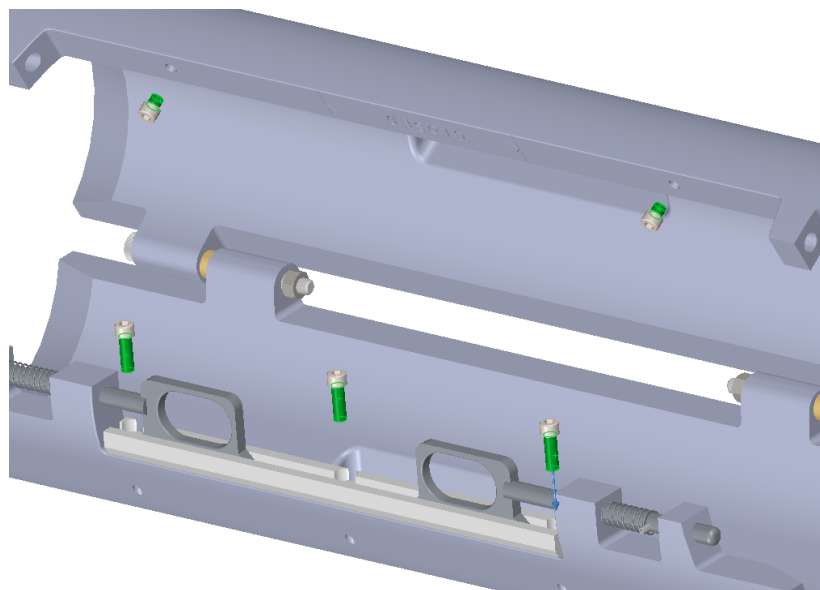
Loctite Marine Grade Anti-Seize

Apply to green surfaces as per manufactures recommendations.

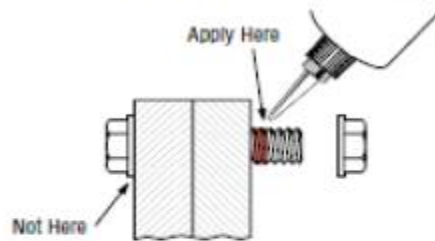


Loctite 243 (Blue) w/ Loctite Primer

Apply to green surfaces as per manufactures recommendations.

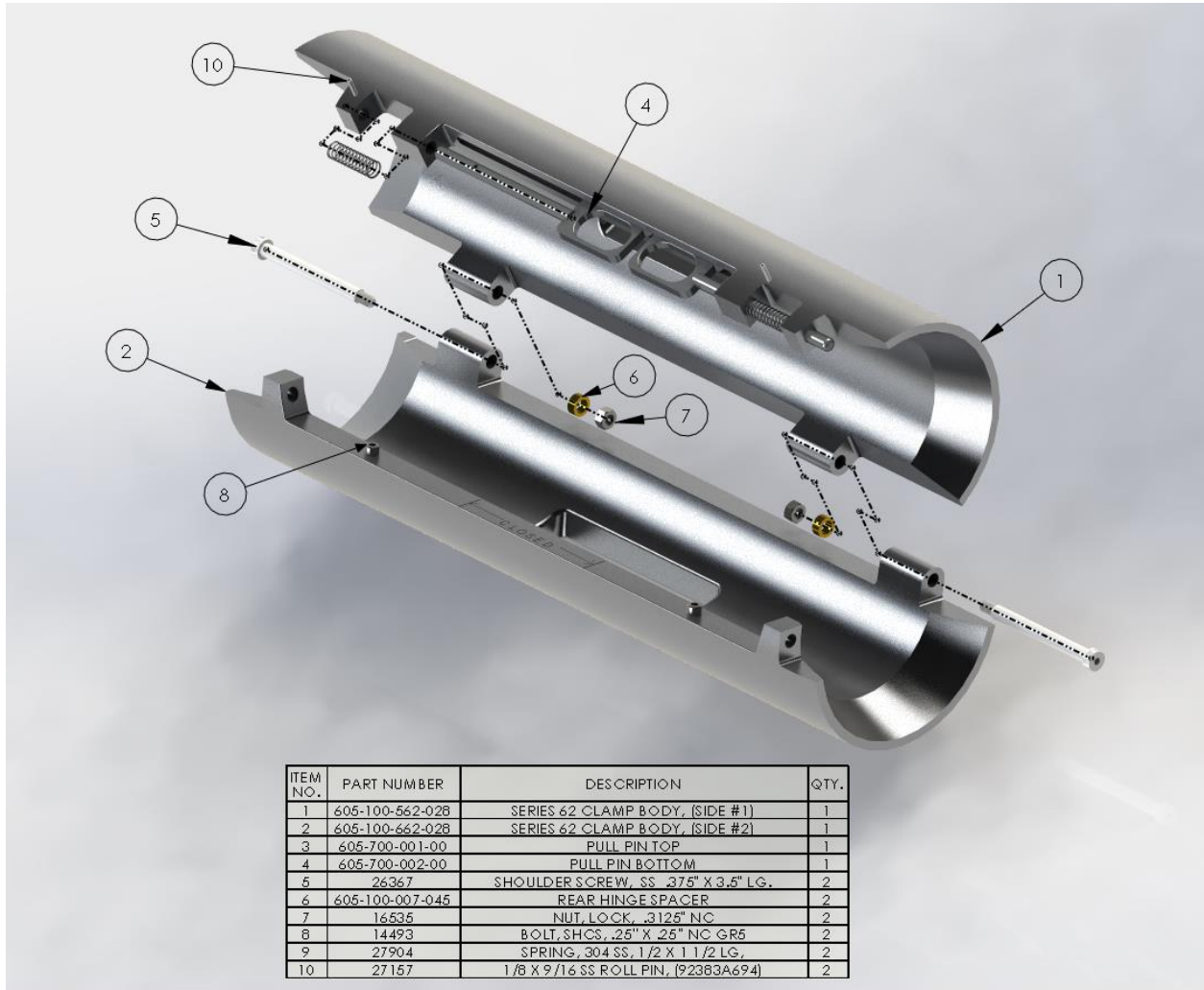


THRU HOLE (BOLTS AND NUTS)



1. Clean all threads (bolt and nut) with Loctite® ODC-Free Cleaner & Degreaser.
2. If necessary, spray all threads with Loctite® 7649 (Primer N) or Loctite® 7471 (Primer T). Allow to dry.
3. Select the proper strength (low, medium, high) Loctite® Threadlocker product.
4. Insert bolt into thru hole assembly.
5. Apply several drops of Threadlocker onto bolt at targeted tightened nut engagement area.
6. Assemble and tighten nut as usual.

Parts List



ITEM NO.	PART NUMBER	DESCRIPTION	QTY.
1	605-100-562-028	SERIES 62 CLAMP BODY, (SIDE #1)	1
2	605-100-662-028	SERIES 62 CLAMP BODY, (SIDE #2)	1
3	605-700-001-00	PULL PIN TOP	1
4	605-700-002-00	PULL PIN BOTTOM	1
5	26367	SHOULDER SCREW, SS .375" X 3.5" LG.	2
6	605-100-007-045	REAR HINGE SPACER	2
7	16535	NUT, LOCK, .3125" NC	2
8	14493	BOLT, SHCS, .25" X .25" NC GR5	2
9	27904	SPRING, 304 SS, 1/2 X 1 1/2 LG.	2
10	27157	1/8 X 9/16 SS ROLL PIN, (92383A694)	2