

HUB CITY IRON WORKS JAR CLAMP

(47, 62, 66, 81 & 95 SERIES) OPERATOR'S MANUAL & PARTS BOOK



Hub City Iron Works
700 E Texas Ave.
Rayne, LA 70578
Phone: (337) 334-6969
Fax: (337) 365-6565
www.hubcityironworks.com

Customer: _____
Location: _____
Job #: _____
Local Rep: _____
Rep Phone # _____
Document # _____

Table of Contents

General Information 3
Operation 3
Maintenance 4
Parts List..... 6

Service

Call: 337.334.6969

Email: servicerequest@hubcityironworks.com

Spare Parts

Call: 337.334.6969

Visit: www.hubcityironworks.com

Sales

Call: 337.334.6969

Email: sales@hubcityironworks.com

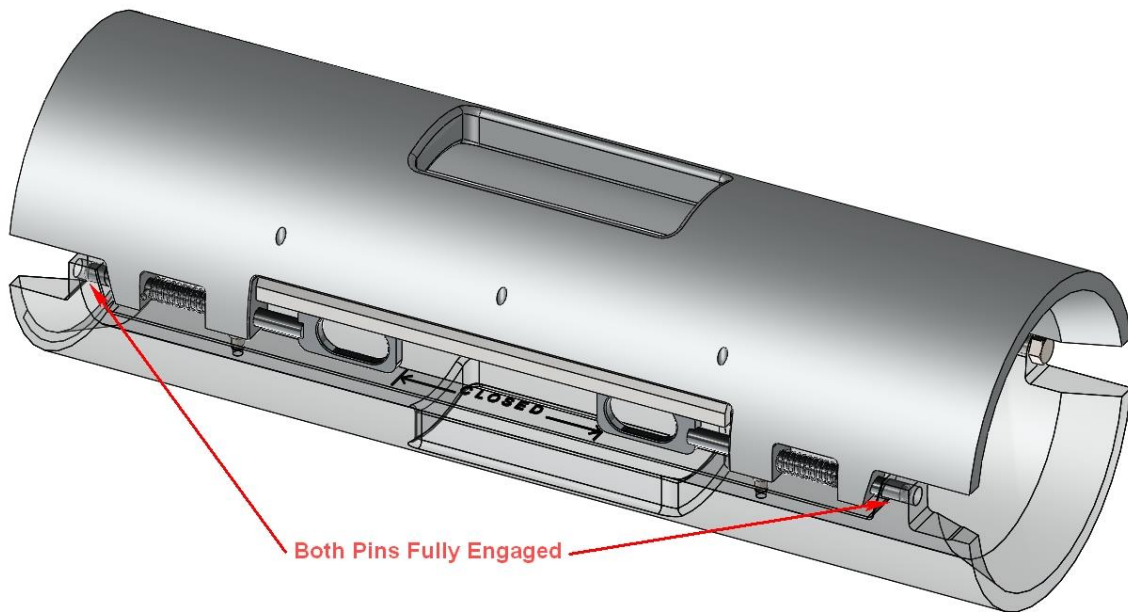
General Information

Hub City Iron Works' Jar Clamp is designed to function as a safety device for the Megaton series of drilling jars when on the rig floor. It functions by enveloping the jar when fully extended and prevents it from firing accidentally.

Operation

Squeeze the two pins together to allow the clamp to open. Place around jar and close the clamp. Ensure both pins are fully engaged into the receiver portion of the clamp. Only use the appropriate series of jar clamp on a particular jar.

NOTE: Do not force the clamp shut if the hinges become locked. This can permanently damage the clamp.

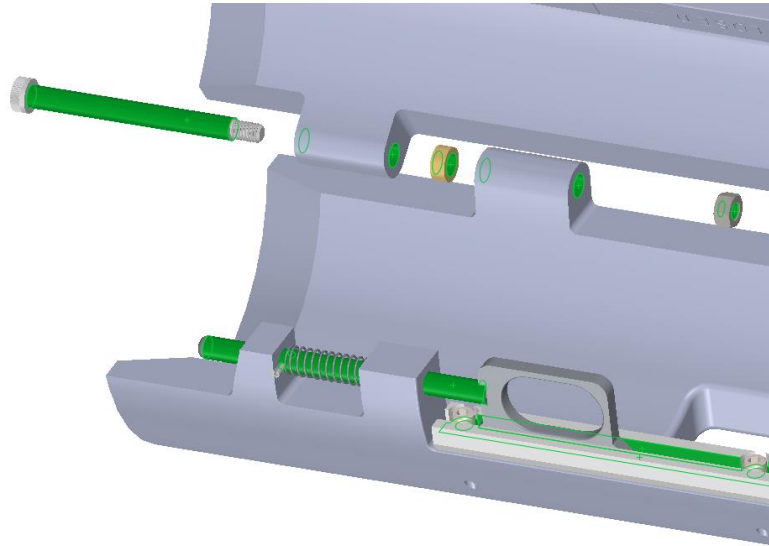


Maintenance

Upon return from jobs, the clamp should be cleaned inspected for damage. All defective parts should be replaced (See parts list for ordering information). After cleaning, all components should be lubricated as stated below.

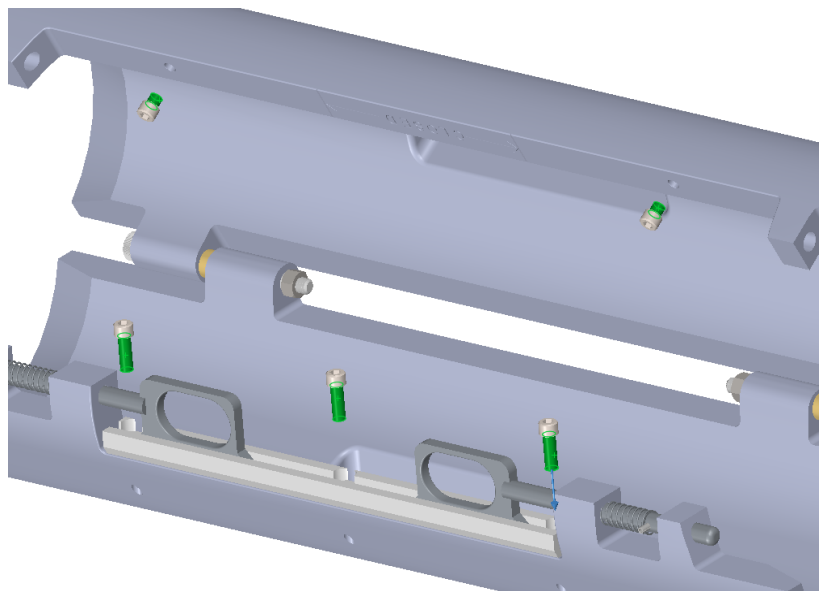
Loctite Marine Grade Anti-Seize

Apply to green surfaces as per manufactures recommendations.

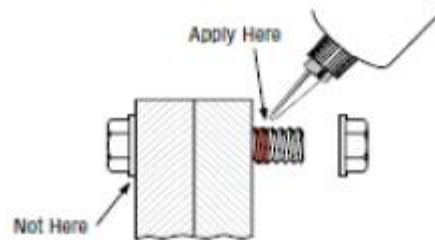


Loctite 243 (Blue) w/ Loctite Primer

Apply to green surfaces as per manufacture's recommendations.

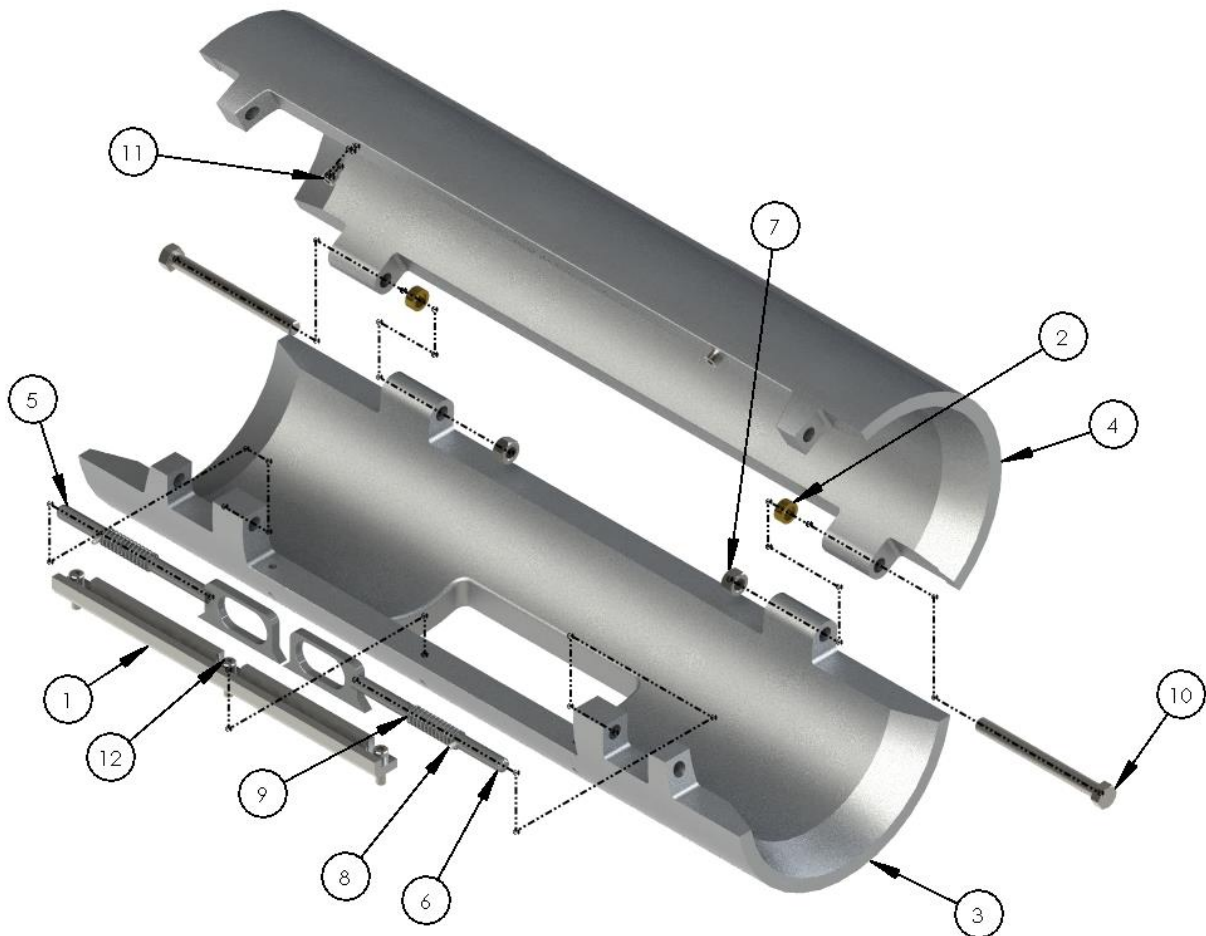


THRU HOLE (BOLTS AND NUTS)



1. Clean all threads (bolt and nut) with Loctite® ODC-Free Cleaner & Degreaser.
2. If necessary, spray all threads with Loctite® 7649 (Primer N) or Loctite® 7471 (Primer T). Allow to dry.
3. Select the proper strength (low, medium, high) Loctite® Threadlocker product.
4. Insert bolt into thru hole assembly.
5. Apply several drops of Threadlocker onto bolt at targeted tightened nut engagement area.
6. Assemble and tighten nut as usual.

Parts List



| ITEM NO. | PART NUMBER 47 Series | PART NUMBER 62 Series | PART NUMBER 66 Series | PART NUMBER 71 Series | PART NUMBER 81 Series | PART NUMBER 95 Series | DESCRIPTION | QTY. |
|----------|--------------------------|--------------------------|--------------------------|--------------------------|--------------------------|--------------------------|-----------------------|------|
| 1 | 605-100-005-016 | 605-100-006-016 | 605-100-004-016 | 605-100-004-016 | 605-100-004-016 | 605-100-004-016 | PIN GUIDE, REMOVABLE | 1 |
| 2 | 605-100-007-045 | 605-100-007-045 | 605-100-007-045 | 605-100-007-045 | 605-100-007-045 | 605-100-007-045 | REAR HINGE SPACER | 2 |
| 3 | 605-100-347-028 | 605-100-562-028 | 605-100-366-028 | 605-100-371-028 | 605-100-381-028 | 605-100-395-028 | CLAMP BODY, (SIDE #1) | 1 |
| 4 | 605-100-447-028 | 605-100-662-028 | 605-100-466-028 | 605-100-471-028 | 605-100-481-028 | 605-100-495-028 | CLAMP BODY, (SIDE #2) | 1 |
| 5 | 27614 | 27614 | 27614 | 27614 | 27614 | 27614 | PULL PIN TOP | 1 |
| 6 | 27615 | 27615 | 27615 | 27615 | 27615 | 27615 | PULL PIN BOTTOM | 1 |
| 7 | 16531 | 16531 | 16531 | 16531 | 16531 | 16531 | NUT, LOCK | 2 |
| 8 | 27157 | 27157 | 27157 | 27157 | 27157 | 27157 | SS ROLL PIN | 2 |
| 9 | 27904 | 27904 | 27904 | 27904 | 27904 | 27904 | SPRING, 304 SS | 2 |
| 10 | 28275 | 28275 | 28275 | 28275 | 28275 | 28275 | BOLT, HHCS, SS | 2 |
| 11 | 44283 | 44283 | 44283 | 44283 | 44283 | 44283 | BOLT, SHCS, SS | 2 |
| 12 | 48480 | 48480 | 44284 | 44284 | 44284 | 44284 | BOLT, SHCS, SS | 3 |